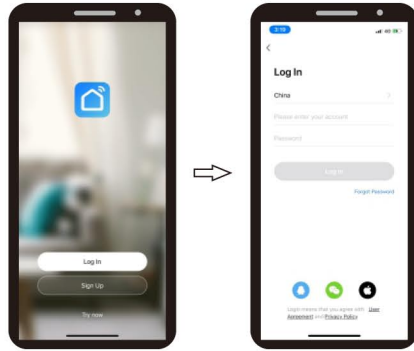


1. Download App

- Scan the QR code and download App
Use your phone to scan the QR code below to download App.
- Search "Smart Life" by Google Play with Android phone or App Store with Iphone .



2. Power supply

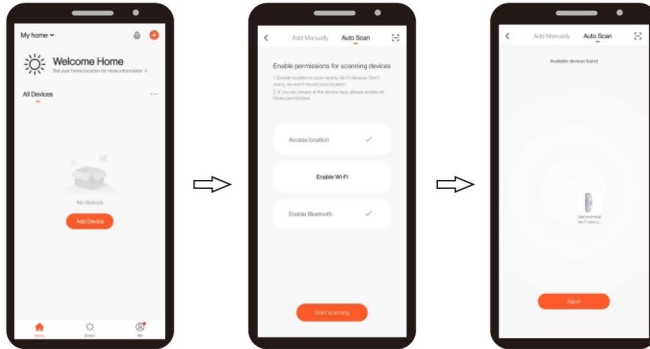
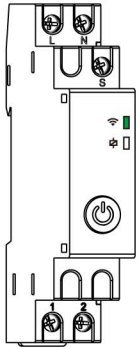
Connect the device to AC/DC48V-240V as per the wiring diagram mentioned in step 23.

3. Register/Login Account

Open the App and register an account.

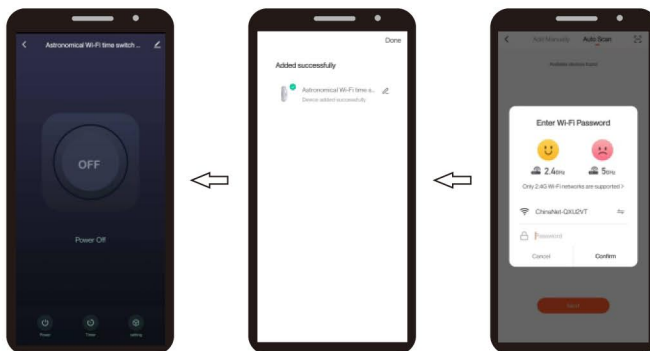
4. Adding a new device

Press and hold for about 5s until light blinks fast.



Click on homepage or click Add Device

Select "Auto Scan". Both WiFi and bluetooth are available.

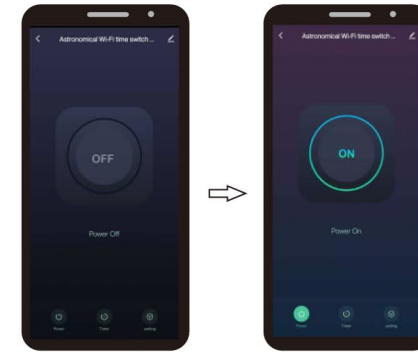


Connect successfully. Device name is editable.

Input WiFi password and confirm.

5. Switch

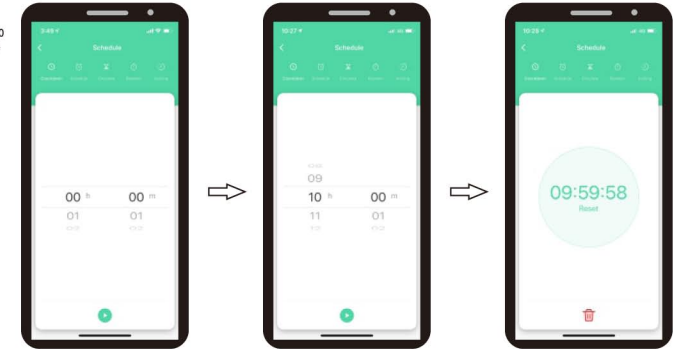
Click can turn on or turn off the device.



6. Count down time

(The "Countdown" function allows user to apply a countdown to the operation time of connected device).

Select timer function and enter



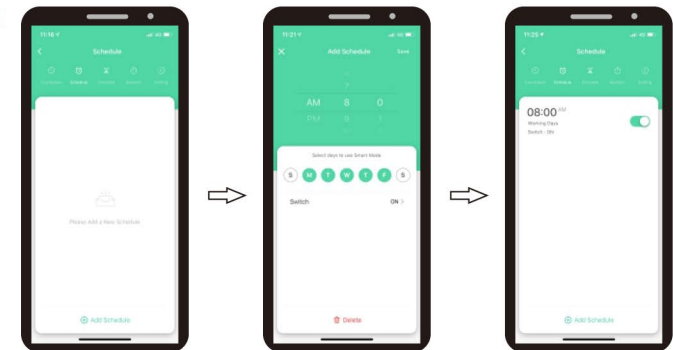
Select "Countdown" function.

Set the elapse time h(hour) and m(minute) and press .

Begin the "countdown" timing.

7. Daily/Weekly program

Select timer function and enter



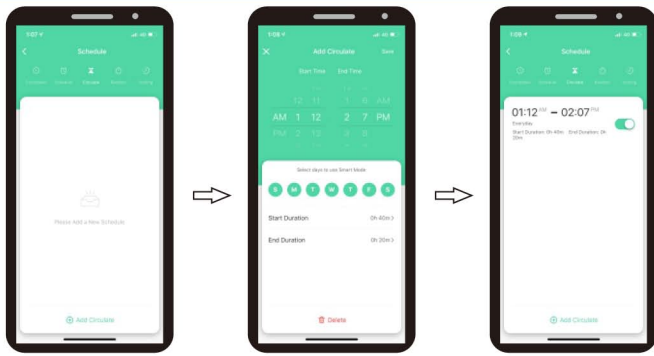
Select "Schedule" function and click "Add schedule".

Set time, week, output state(ON or OFF) and click "Save".

Back to "Schedule" after saving.

Note: Using bluetooth can find the device faster.

8. Circulate time
 (The "Circulate" function allows user to set interventions with programmed duration in a certain period of time).
 Select ⌚ timer function and enter.
 Set a total cycle duration, and then set start and end time in this duration. The device will be ON and OFF cyclically according to the duration.

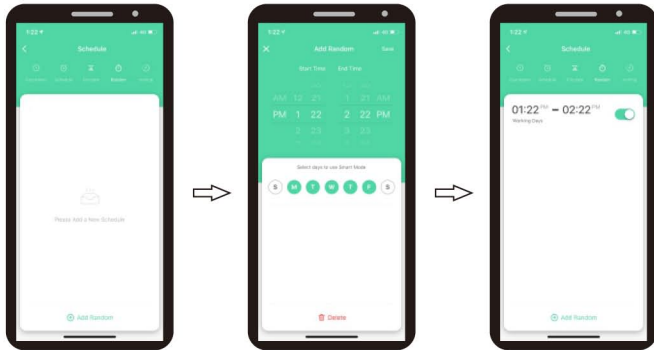


Select "Circulate" function and click "Add circulate".

Set start and end time, week and click "Save".

Back to "Circulate" after saving.

9. Random time
 (The "Random" function allows user to set a time interval for random switch on and off).
 Select ⌚ timer function and enter.
 * = 1h: works within 2-30min after starting, and stop until 2-30min before closing.
 * ≤ 1h: works within 2-x min after starting, and stop until 2-x min before closing.
 x = time interval/2-2.

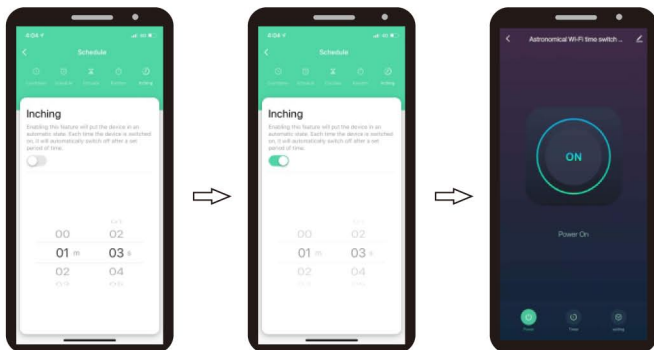


Select "Random" function and click "Add Random".

Set start and end time, week and click "Save".

Back to "Random" after saving.

10. Timer-Inching
 Select ⌚ timer function and enter.

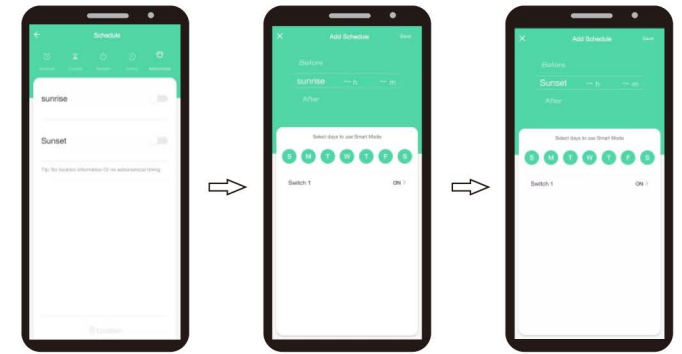


Select "Inching" function.

Set the inching delay time, and click "Switch" to turn on.

Back to menu by clicking ">".

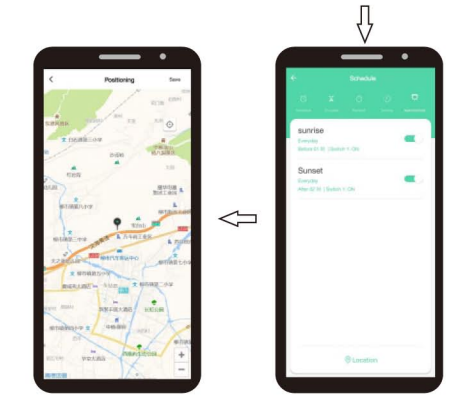
11. Astronomical setting
 Select 🌅 timer function and enter.



Select "Astronomical" function.

Set the sunrise time and click "Save".

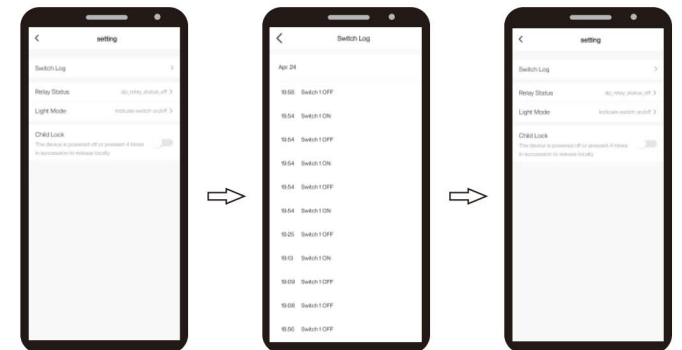
Set the sunset time and click "Save".



Back to "Astronomical" after saving.

Finish sunrise/sunset time setting and click "Location".

12. Switch log
 Click "setting" and enter



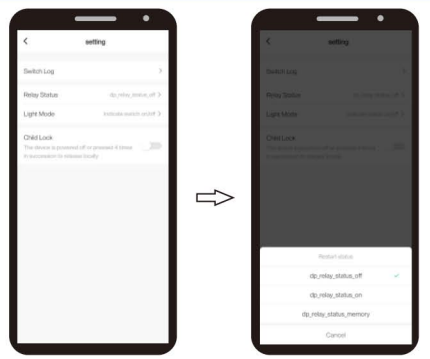
Select "Switch Log" function.

Check the record of switching on/off.

Back to "Setting" by clicking ">".

13. Setting-Relay status

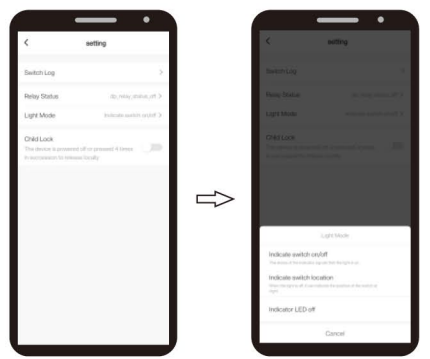
Click "setting" and enter



Select "Relay status" function.
Select "dp_relay_status_off", "dp_relay_status_on", or "dp_relay_status_memory"

14. Setting-Light mode

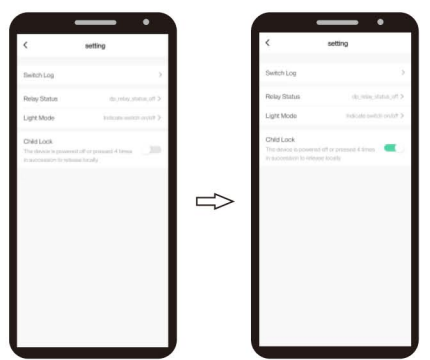
Click "setting" and enter



Select "Light mode".
Select "Indicate switch on/off", "Indicate switch location" or "Indicate LED off"

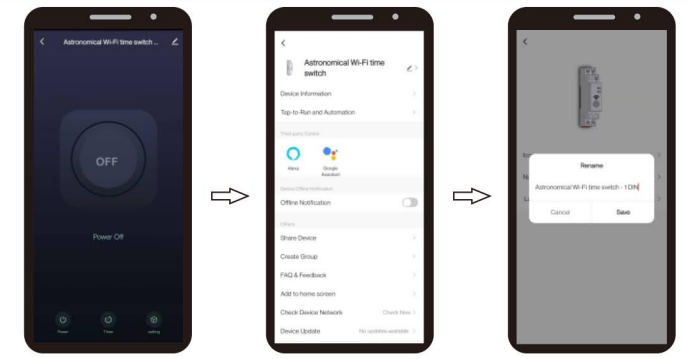
15. Setting-Child Lock

Click "setting" and enter



Select "Child Lock" function.
Turn on or turn OFF this function.

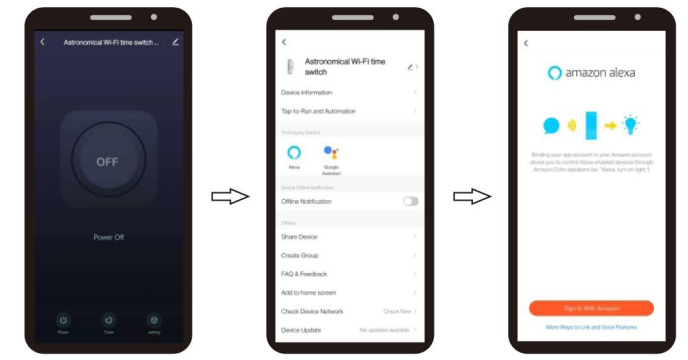
16. Modify Device Name



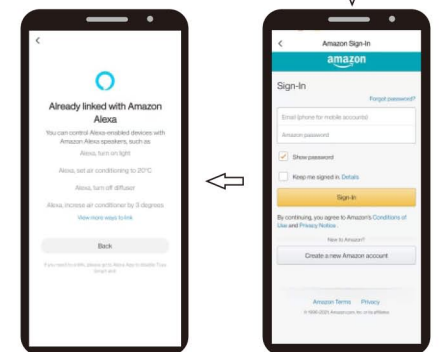
Click "☐" on the upper right corner to enter setting
Click ">" on the upper right corner to enter setting
Input the device name and confirm by clicking "confirm"

17. Third-party Control

(work with Alexa by Amazon, Google assistant by Google etc. Take Alexa control for example).



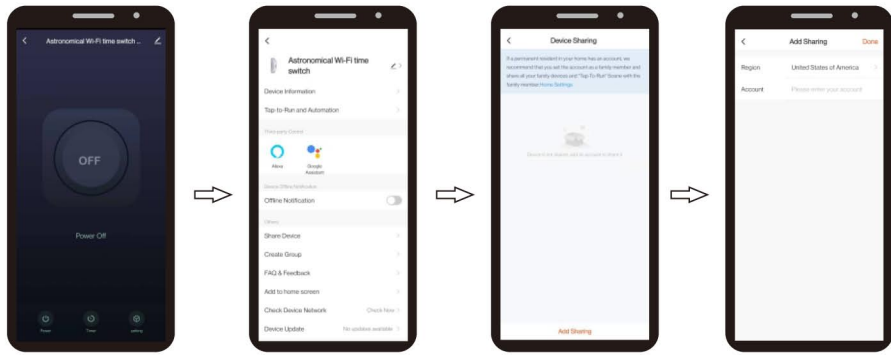
Click "☐" on the upper right corner to enter setting
Select "Alexa".
Click "Sign in with Amazon"



Linked with Amazon Alexa successfully and click "Back".
Input email and password and click "Sign-in".

RS-WIFI2 Astronomical Wi-Fi Time Switch

18. Share Device



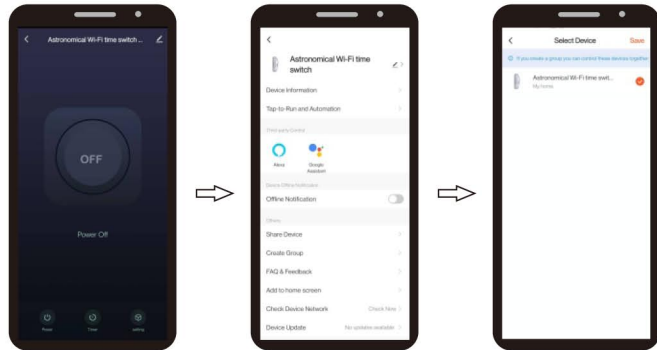
Click "☰" on the upper right corner to enter setting.

Select "Share Device".

Click "Add sharing" and enter setting.

Input the device name which you want to share and click "Done", then device will automatically appear in shared devices.

19. Create Group



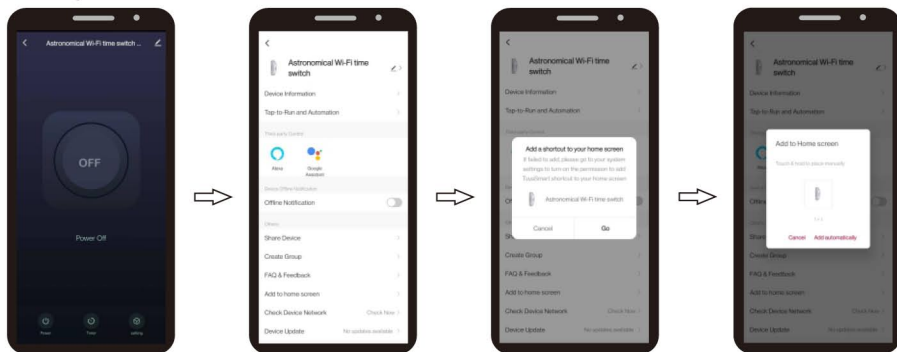
Click "☰" on the upper right corner to enter setting.

Select "Create Group".

Select the devices and click "Save".

20. Setting-Add to home screen

Click "setting" and enter



Click "☰" on the upper right corner to enter setting.

Select "Add to home screen".

Click "Go" to enter.

Click "Add automatically". The device will appear on home screen of mobile phone.

RS-WIFI2 Astronomical Wi-Fi Time Switch

21. Operate manually and pulse externally

Button to manually control the device
 - Quick press: command to switch the relay status (ON/OFF)
 - >5s, (first switch-on) search for a WiFi network to connect;
 - >5s, (device already connected to the WiFi network) RESET command.



External pulse, see wiring diagram on 16.
 Connect control device output, operation time <5s.
 >5s, the device will search for a WiFi network.

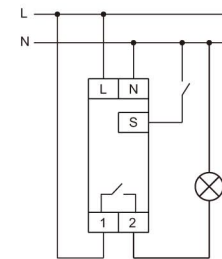
The Green status LED of WiFi network
 -Flashing fast: waiting to connect to the WiFi
 -On: connected to the WiFi network;
 -Off: problems with the WiFi network.

Red relay status LED
 - LED ON, Relay ON
 - LED OFF, Relay OFF

22. Technical data

Rated voltage:	AC/DC48-240V (AC 50/60Hz)
Rated current:	16A 250V(COSφ =1)
Supply terminals:	A1-A2
Output terminals:	1-2
Output contact:	1NO
Electrical life:	10 ⁵
Operating temperature:	-20℃...+60℃
WiFi Frequency:	2.412-2.484GHz
WiFi standard:	IEEE 802.11b/g/n
BLE standard:	Low power consumption bluetooth4.2
Safety system	WEP、WPA/WPA2、WPA/WPA2 PSK(AES)
Mounting	35mm Din rail(EN60715)

23. Wiring diagram



24. Dimensions

