



FUSIBILE TIPO
FUSE LINK 5 x 20 mm

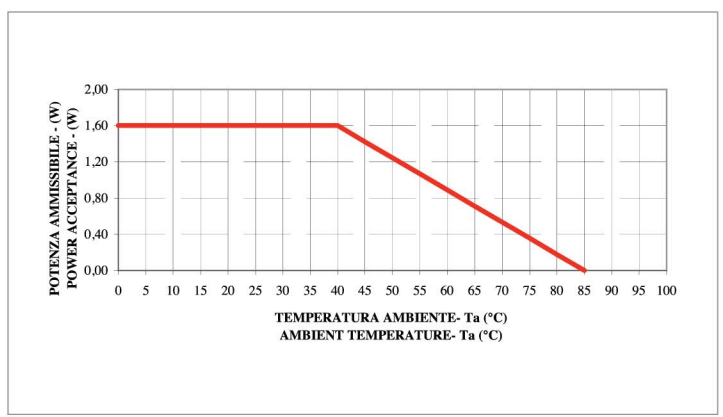
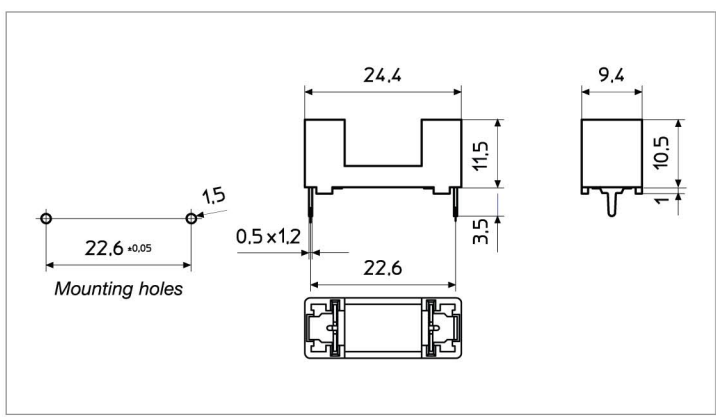
MONTAGGIO CS
MOUNTING PCB



Corrente nominale Rated Current	A	6,3
Tensione nominale Rated Voltage	VAC	250
Potenza dissipabile Rated Power Acceptance	W	1,6
Corpo isolante Housing	—	PA - UL 94 V0
Temperatura ambiente ammissibile Admissible ambient air temperature	°C	-30 °C to 85 °C
Protezione contro le scosse elettriche Shocksafe category	PC	PC1
Grado di protezione Degree of protection	IP	IP00
Resistenza di contatto Contact Resistance	mΩ	< 5

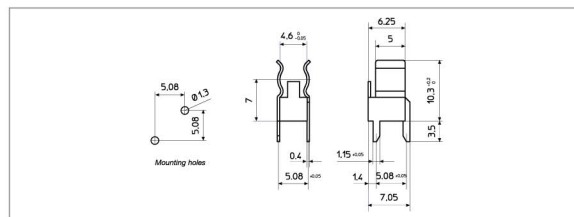
 EN 60127-6	Corrente Nominale Rated Current	A	6,3
	Tensione nominale Rated Voltage	VAC	250
	Potenza dissipabile Rated Power Acceptance	W	1,6
 UL 512 + C22.2 no. 39	Corrente Nominale Rated Current	A	10
	Tensione nominale Rated Voltage	VAC	250
	Potenza dissipabile Rated Power Acceptance	W	—

Colore standard Standard colour	—	verde - green
Altri colori Other colours	—	A richiesta - On demand
Accessori Accessories	Pag	sezione A3 - section A3
Altri dati Other information	Pag	sezione B/A1 - section B/A1



ACCESSORI ACCESSORIES

CT134 CONTATTI / CLIPS



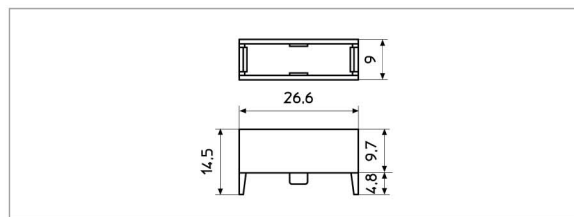
Materiale / Material

Cu Zn 37

Trattamento galvanico / Plating

Ni + Sn

BS140NA CAPPuccio / COVER



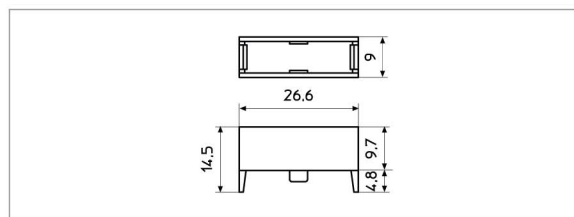
Materiale / Material

PC - UL 94 V2

Colore / Colour

Trasparente / Clear transparent

BS140ANA CAPPuccio / COVER



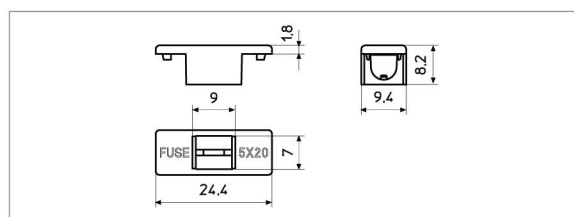
Materiale / Material

PC - UL 94 VO

Colore / Colour

Opaco / Opaque

BS232 CAPPuccio / COVER



Materiale / Material

PA - UL94 VO

Colore standard / Standard colour

Verde / Green

Altri colori / Other colours

A richiesta / On demand

TABELLA DI CORRISPONDENZA DEGLI ACCESSORI ACCESSORIES CORRESPONDANCE TABLE

	PTF/15	PTF/15B	PTF/75	PTF/76	PTF/77	PTF/78
BS140NA	•	•				
BS140ANA	•	•				
BS232			•	•	•	•