



DMO SERIES | PCB MOUNT



Features

- Mini-SIP SSR
- Ratings to 3A @ 60 CVD
- MOSFET Output
- DC Control
- Low Open Output

Product Selection

Control Voltage	3A
3-10 VDC	DMO063



SPECIFICATIONS

Output Specifications ⁽¹⁾

Description	DMO
Operating Voltage Range (47-63Hz) [Vdc]	0-60
Maximum Off-State Leakage Current @ Rated Voltage [μA]	100
Maximum Load Current [Adc]	3.0
Minimum Load Current [Adc]	0
Maximum Surge Current [Adc]	12 (10ms)
Maximum On-State Voltage Drop @ Rated Current	0.4 ⁽²⁾
Maximum Power Factor (with Maximum Load)	0.5

Input Specifications ⁽¹⁾

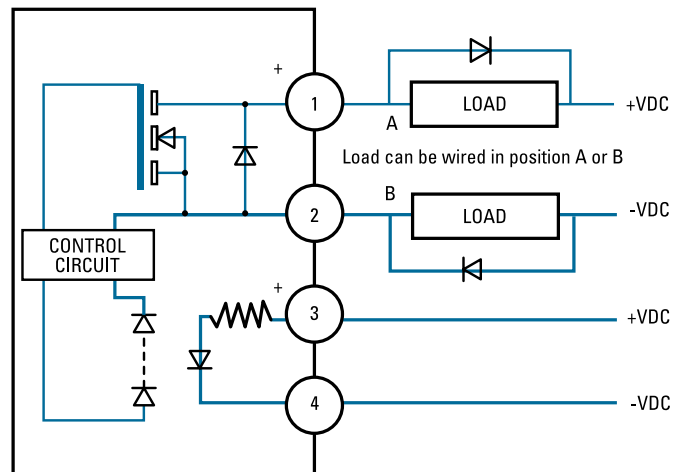
Description	DM0063
Control Voltage Range	3-10 VDC
Must Turn On Voltage	3.0 VDC
Must Turn Off Voltage	1.0 VDC
Typical Input Current @5 VDC	20 mAdc
Nominal Input Impedance	270 Ohm
Maximum Turn-On Time [μsec]	50
Maximum Turn-Off Time [μsec]	300

General Specifications

Description	Parameters
Dielectric Strength, Input/Output/Base (50/60Hz) ⁽³⁾	2500 Vrms
Minimum Insulation Resistance (@500 VDC) ⁽³⁾	10 ⁹ Ohm
Maximum Capacitance, Input/Output	8 pF
Ambient Operating Temperature Range	-30° to 80°C
Ambient Storage Temperature Range	-30° to 125°C
Weight (typical)	0.15 oz. (4.3 g)
Encapsulation	Thermally Conductive Epoxy



WIRING DIAGRAM ⁽⁴⁾

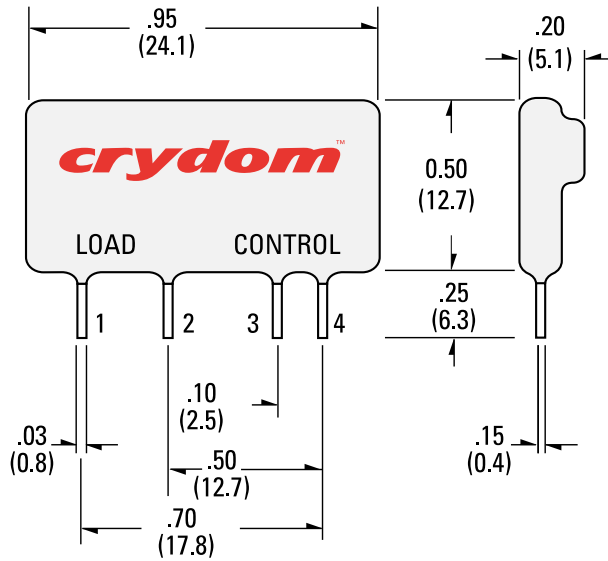




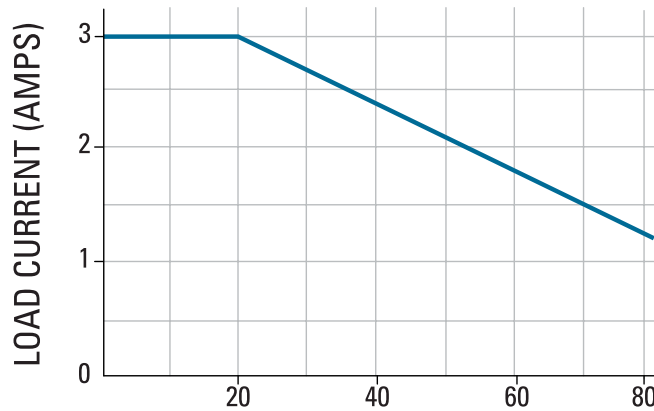
MECHANICAL SPECIFICATIONS

Tolerances: ± 0.02 in / ± 0.5 mm

All dimensions are in inches [millimeters]



THERMAL DERATE INFORMATION



DMO Max. Load Current vs.Temp



ORDERING OPTIONS

Example : DMO 063

FET Output, 3 Amp Load Current

Series

DMO

063

DMO: FET Output

Required for Valid Part Number

Load Current

063: 3 Amps

Required for Valid Part Number



GENERAL NOTES

- (1) All parameters at 25°C unless otherwise specified.
- (2) Typical On-State Resistance = 0.13 ohms
- (3) Dielectric and insulation resistance are measured between input and output.
- (4) Inductive loads should be diode suppressed.

For additional information or specific questions, contact Sensata Technical Support.



AGENCY APPROVALS & CERTIFICATIONS



- Designed in accordance with the requirements of IEC 62314



WARNINGS



RISK OF MATERIAL DAMAGE AND HOT ENCLOSURE

- The product's side panels may be hot, allow the product to cool before touching
- Follow proper mounting instructions including torque values
- Do not allow liquids or foreign objects to enter this product

Failure to follow these instructions can result in serious injury, or equipment damage.



HAZARD OF ELECTRIC SHOCK, EXPLOSION OR ARC FLASH

- Disconnect all power before installing or working with this equipment
- Verify all connections and replace all covers before turning on power

Failure to follow these instructions will result in death or serious injury.